

GRAINS INFORMATION SHEET



1 WHEAT

➤ Grain Oilseed Pulse

➤ Genus name: *Triticum*

➤ Dimensions (mm): Length: 6–8mm, Width: 4–5mm

➤ Australian wheat production areas: See map (above)

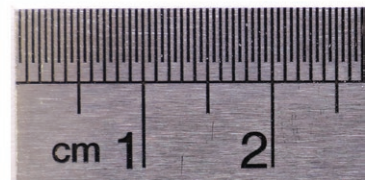
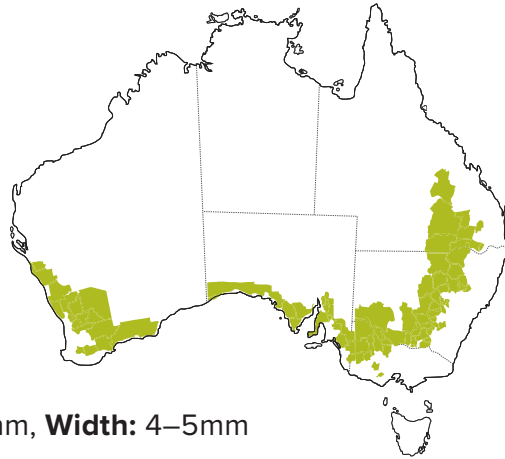
➤ Seed description:

Colour: Variation from white, yellow, tan to reddish brown.

Shape: Oblong/oval-shaped with a blunt tip.

Husk/hull: A yellow, elongated, papery hull may cover the wheat seed.

➤ **End uses:** Flour, noodles, pasta, bread, couscous, biscuits, cakes, pastries, confectionary and livestock feed.



2 BARLEY

➤ Grain Oilseed Pulse

➤ Genus name: *Hordeum*

➤ Dimensions (mm): Length: 6–8mm, Width: 3mm

➤ Australian barley production areas: See map (above)

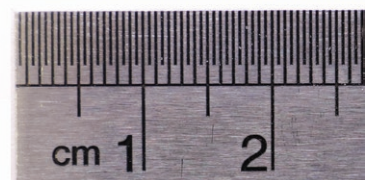
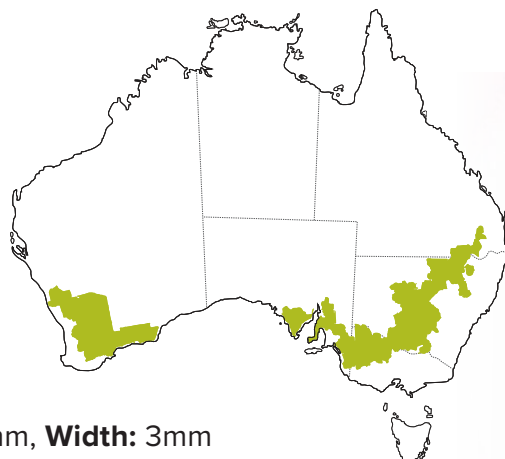
➤ Seed description:

Colour: Varies from beige, light tan to golden yellow.

Shape: Oblong shaped with two distinct blunt tips.

Husk/hull: A yellow/beige, elongated hull may cover the barley seed.

➤ **End uses:** Soups, stews, beer, malt for distilled beverages, malt vinegar, breakfast cereals, Milo, Maltesers, health products and livestock feed.



GRAINS INFORMATION SHEET (cont.)



3 OATS

➤ Grain Oilseed Pulse

➤ Genus name: *Avena*

➤ Dimensions (mm): Length: 6–8mm, Width: 3–4mm

➤ Australian oat production areas: See map (above)

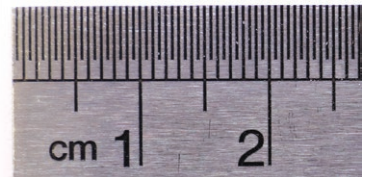
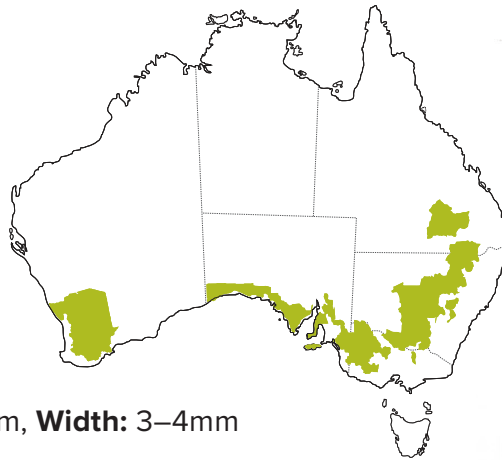
➤ Seed description:

Colour: Yellow to golden.

Shape: Thin/narrow, lacking an auricle with a smooth texture.

Husk/hull: A yellow/beige, elongated, papery hull may cover the oat seed. The hull has pointed tips at each end.

➤ **End uses:** Flour, oatmeal, breakfast cereals, health bars, baked goods (e.g. bread and biscuits), baby food, oat milk, oat rice and livestock feed.



4 MAIZE

➤ Grain Oilseed Pulse

➤ Genus name: *Zea*

➤ Dimensions (mm): Length: 8–11mm, Width: 7mm

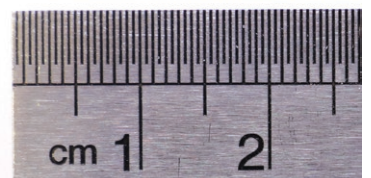
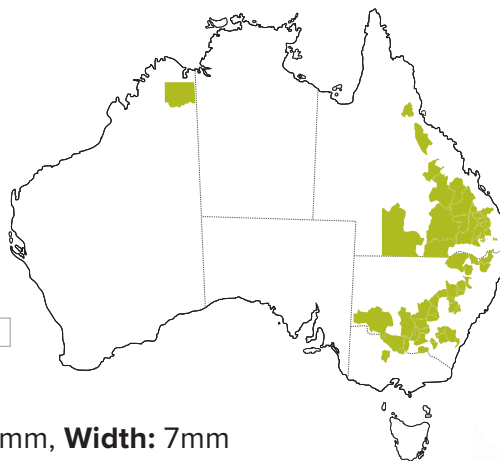
➤ Australian maize production areas: See map (above)

➤ Seed description:

Colour: White to light golden in colour.

Shape: Round or flat from horse tooth-shaped, cone-shaped to spheroid triangular.

➤ **End uses:** Can be consumed when fresh, canned or frozen. Used in cooking products (e.g. flour, cornmeal, starch flour), breakfast cereals, tortilla, snacks (e.g. chips), popcorn, silage, pharmaceuticals, liquid glucose, ethanol, biofuels and livestock feed.



GRAINS INFORMATION SHEET (cont.)



5 SORGHUM

➤ Grain Oilseed Pulse

➤ Genus name: *Sorghum*

➤ Dimensions (mm): Diameter : 4–5mm

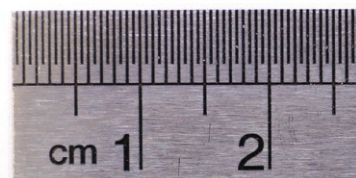
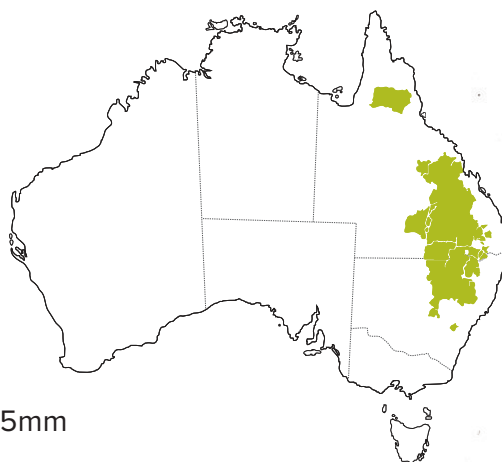
➤ Australian sorghum production areas: See map (above)

➤ Seed description:

Colour: Seeds can be white, pale yellow to deep reds, purples and browns.

Shape: Rounded and bluntly pointed. Varies in size and shape with cultivar.

➤ **End uses:** Livestock feed, ethanol production and baking.



6 CANOLA

➤ Grain Oilseed Pulse

➤ Genus name: *Brassica*

➤ Dimensions (mm): Diameter: 1mm

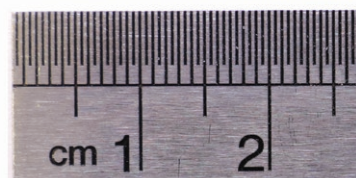
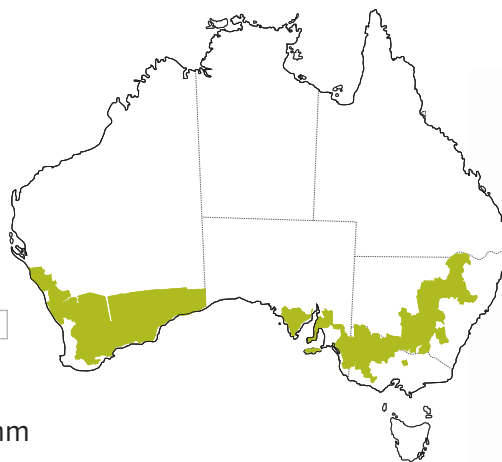
➤ Australian canola production areas: See map (above)

➤ Seed description:

Colour: Predominantly black or red/brown tinged.

Shape: Spherical to oval-shaped.

➤ **End uses:** Cooking oil, butter, spreads, environmentally-friendly lubricants, cosmetics, biofuel production, canola meal (high protein livestock feed for pigs, poultry and the dairy industry).



GRAINS INFORMATION SHEET (cont.)



7 SUNFLOWERS

➤ Grain Oilseed Pulse

➤ Genus name: *Helianthus*

➤ Dimensions (mm): Length: 10–11mm, Width: 4–6mm

➤ Australian sunflower production areas: See map (above)

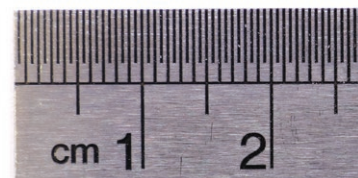
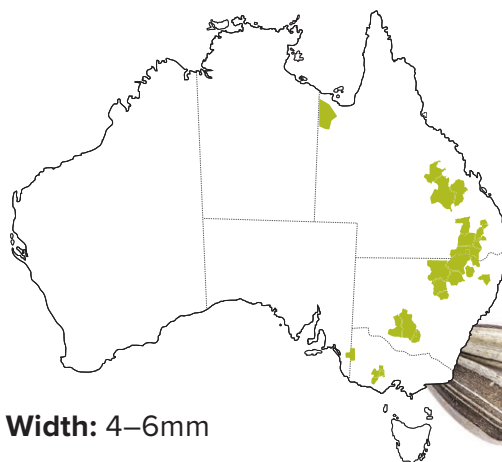
➤ Seed description:

Colour: Black or black with white stripes.

Shape: Cylindrical or drop-shaped.

Husk/hull removed: If the sunflower seed has had its hull removed, it may appear white/beige in colour. It will be cylindrical in shape with one pointed tip and one rounded tip.

➤ **End uses:** Cooking oils, spreads, dyes, and can also be roasted. Non-oil varieties are used for birdseed, and the leaves are used for fodder.



8 SAFFLOWERS

➤ Grain Oilseed Pulse

➤ Genus name: *Carthamus*

➤ Dimensions (mm): Length: 8mm, Width: 4mm

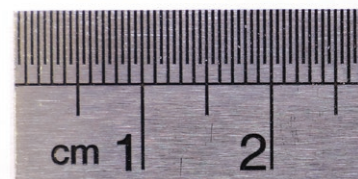
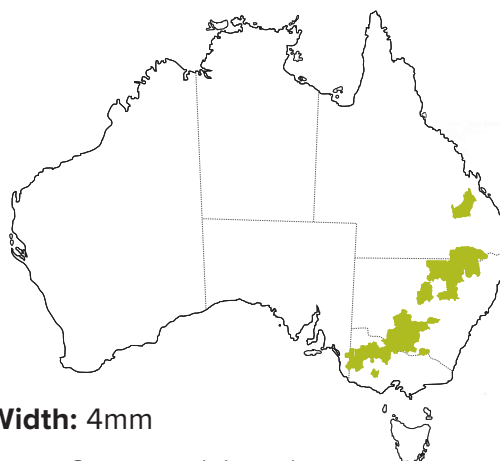
➤ Australian safflower production areas: See map (above)

➤ Seed description:

Colour: White/grey or brown tinged (may be striped) and lustrous.

Shape: Oval and contained in a thick hull.

➤ **End uses:** Vegetable oil spreads, cosmetics, fabric dyes, food colouring, paint and paint solvent, medicines, grazed or stored as hay or silage, used in birdseed and small animal feed mixes.



GRAINS INFORMATION SHEET (cont.)



9 CHICKPEAS

➤ Grain Oilseed Pulse

➤ Genus name: *Cicer*

➤ Dimensions (mm): Length: 10mm, Width: 8–10mm

➤ Australian chickpea production areas: See map (above)

➤ Seed description:

Desi varieties

Colour: Range in colour from brown to light brown and fawn.

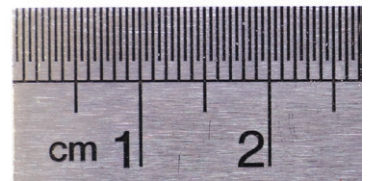
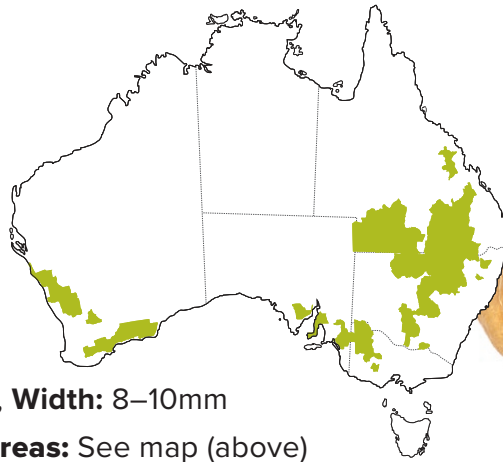
Shape: Small angular seeds, wrinkled at the beak.

Kabuli varieties

Colour: White-cream in colour.

Shape: Larger, rounder seeds that are wrinkled or ribbed with a pointed beak.

➤ **End uses:** Can be consumed when fresh or dried. Used in hummus, salads, soups, stews, dips, and flour in cakes. Also used as a green manure crop and for livestock feed.



10 FIELD PEAS

➤ Grain Oilseed Pulse

➤ Genus name: *Pisum*

➤ Dimensions (mm): Length: 7–8mm, Width: 6mm

➤ Australian field pea production areas: See map (above)

➤ Seed description:

Dun: Greenish-brown coloured. Traditionally dimpled but rounded types exist.

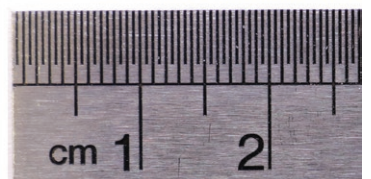
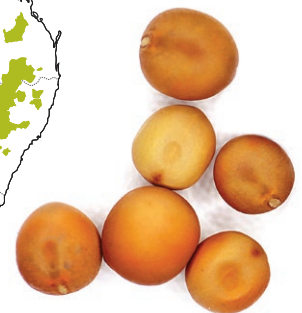
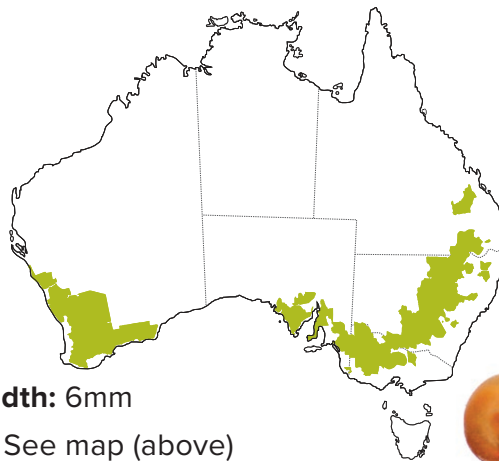
White: Cream coloured, rounded seed.

Maple: Brown, smooth or dimpled, mottled or speckled seed.

Blue: Translucent seed coat, rounded.

Marrowfat: Blue, very wrinkled seed.

➤ **End uses:** Dahl, soups, flour, noodles, snack foods, stock feeds, bird seed and also used for crop rotations.



GRAINS INFORMATION SHEET (cont.)



11 LENTILS

➤ Grain Oilseed Pulse

➤ Genus name: *Lens*

➤ Dimensions (mm): Diameter: 5–6mm

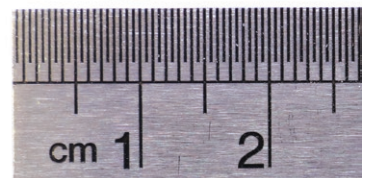
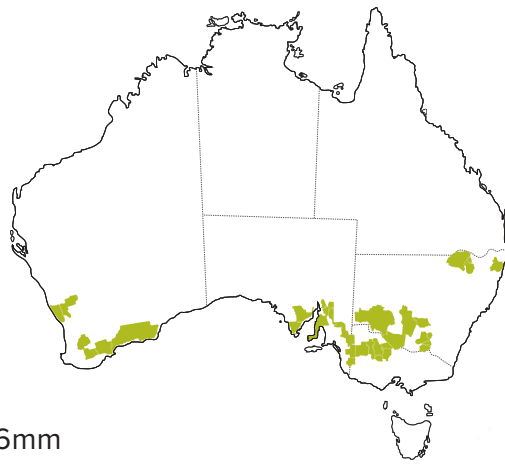
➤ Australian lentil production areas: See map (above)

➤ Seed description:

Colour: Comes in a variety of colours from green, grey/green, red, speckled green, black and tan.

Shape: Curved, oblong and lens-shaped.

➤ End uses: Cooking (e.g. soups and stews), livestock feed and crop rotation.



12 LUPINS

➤ Grain Oilseed Pulse

➤ Genus name: *Lupinus*

➤ Dimensions (mm): Length: 5–6mm, Width: 4–5mm

➤ Australian lupin production areas: See map (above)

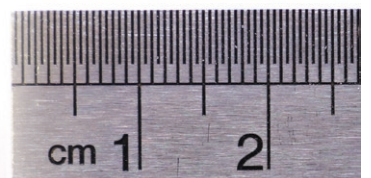
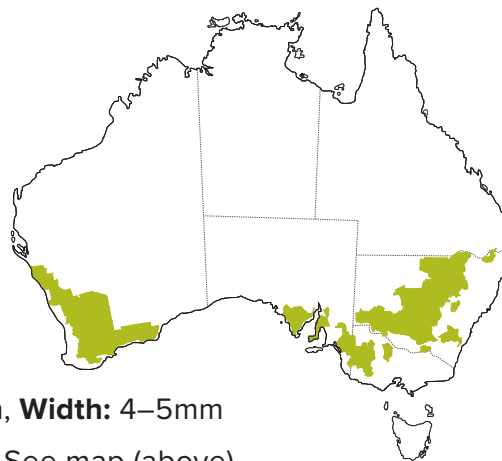
➤ Seed description:

Colour: Mottled/speckled and predominantly beige but can come in a variety of colours.

Shape: Round to oval-shaped and often a medium to large flattened seed. Can vary in sizes.

Husk/hull removed: If the lupin has had its hull removed, it may appear yellow in colour and flattened/oval in shape.

➤ End uses: Predominantly used for livestock feed and crop rotation. Can also be used as flour (producing pasta, breads, cakes, pastry products).





References and Additional Reading

- Corporation, Grains Research and Development (n.d.). *GrowNotes™*. Grains Research and Development Corporation <https://grdc.com.au/resources-and-publications/grownotes>

