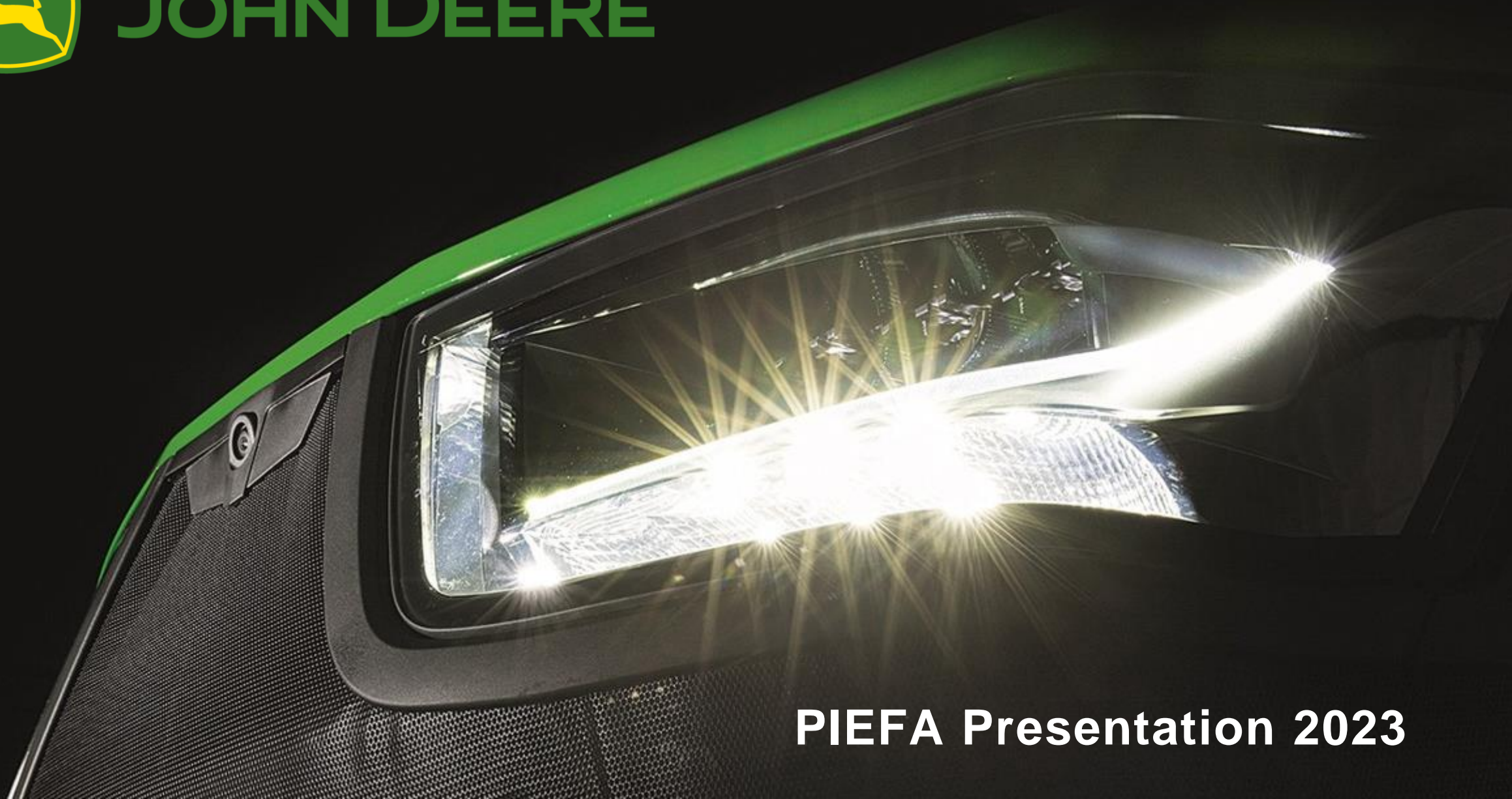




JOHN DEERE



PIEFA Presentation 2023

WE RUN FOR *ALL*



John Deere works in production systems



Corn & Soy



Small Grains



Cotton & Sugar

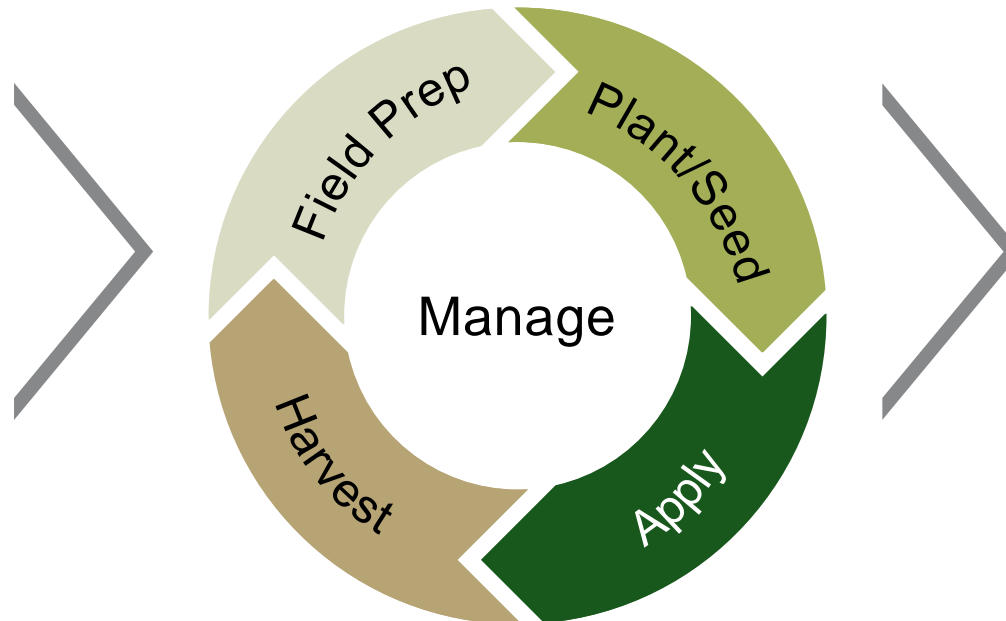


Dairy & Livestock



High Value Crops

Production systems approach

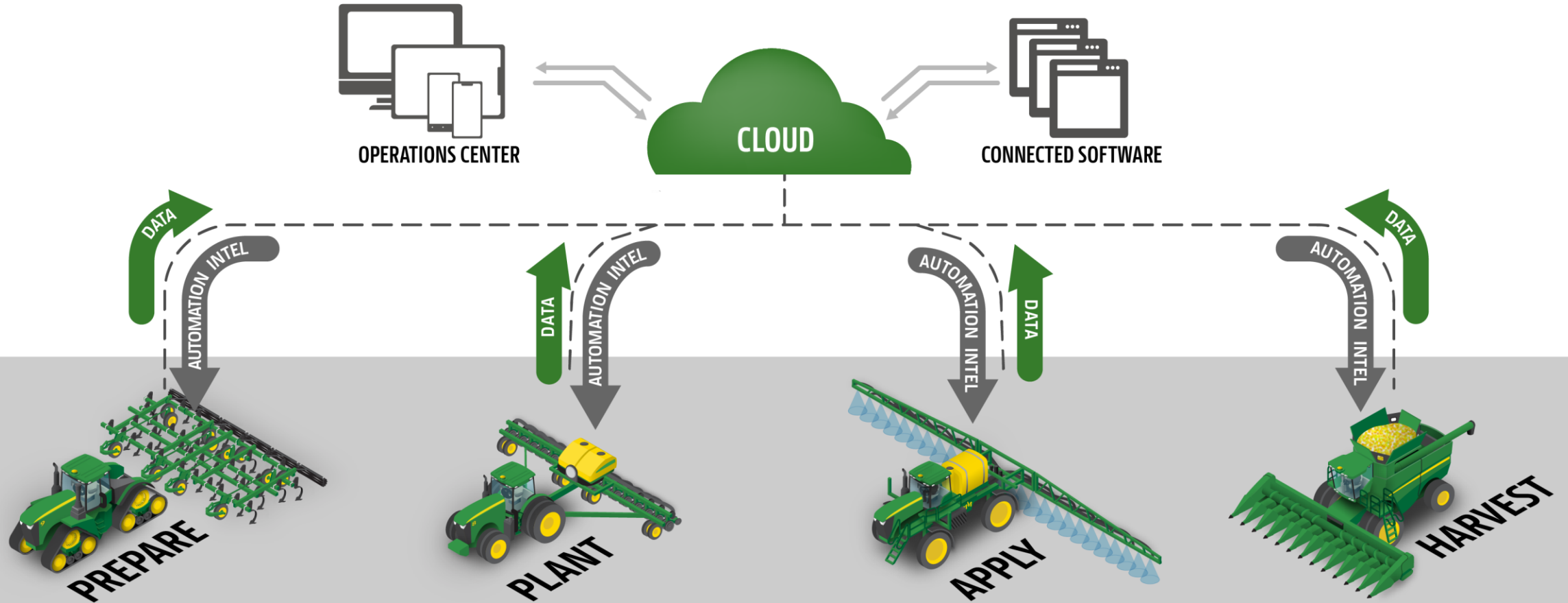


Leads to innovations like these ...

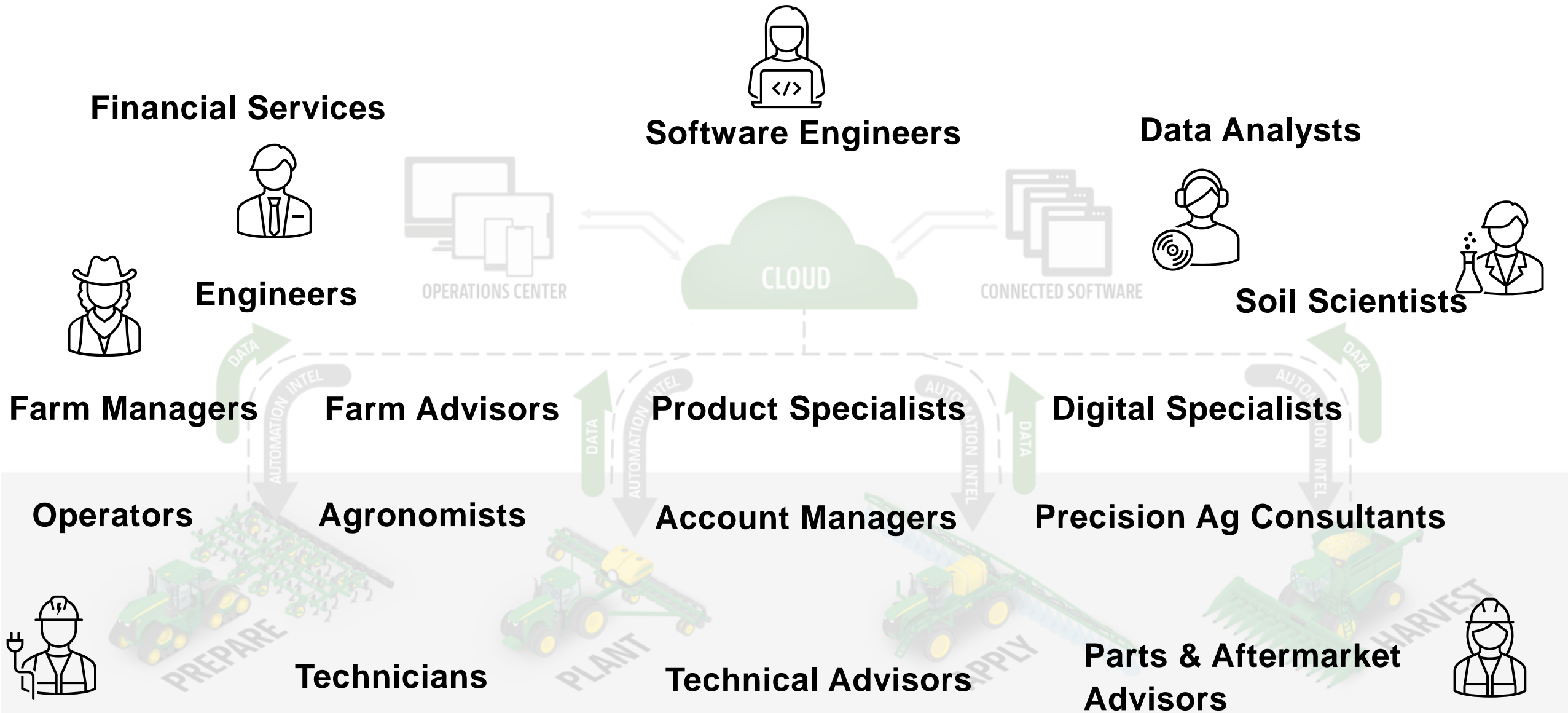


John Deere Precision Ag

Seamlessly connect equipment, decision makers, and partners across production systems



Roles involved in Precision Ag



Framework enabling Precision Agriculture


SETUP


PLAN


MONITOR


ANALYZE



Gen 4



Receiver



JDLink



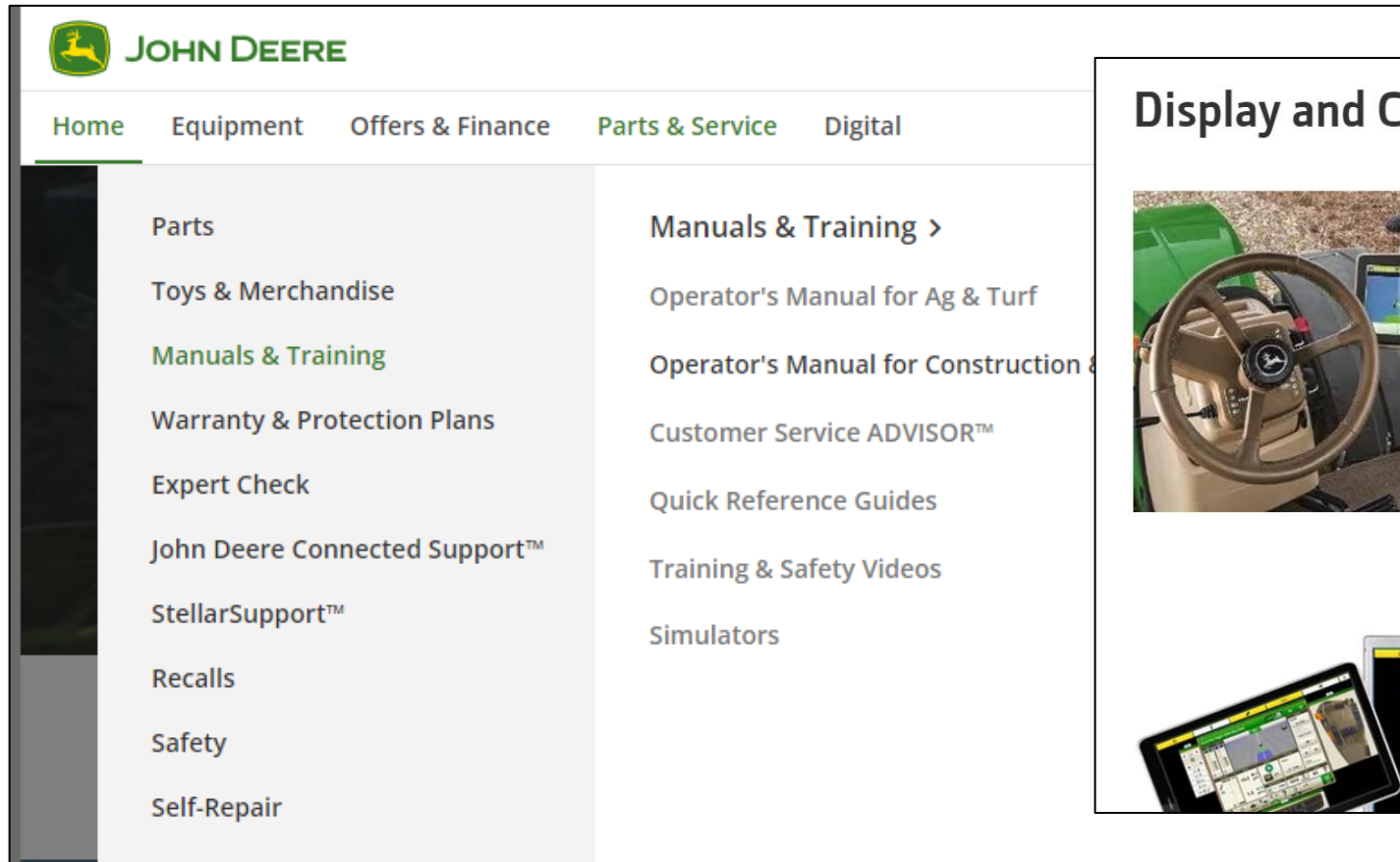
Operations Center

Operators Manuals & Simulator

Operators Manuals & Simulator

[Operator Manual Links](#)

[Simulator Link](#)



The screenshot shows the John Deere website's navigation menu. At the top left is the John Deere logo. Below it are navigation tabs: Home, Equipment, Offers & Finance, Parts & Service, and Digital. A dropdown menu is open under 'Parts & Service', listing: Parts, Toys & Merchandise, Manuals & Training (highlighted in green), Warranty & Protection Plans, Expert Check, John Deere Connected Support™, StellarSupport™, Recalls, Safety, and Self-Repair. To the right of this menu, a 'Manuals & Training >' section lists: Operator's Manual for Ag & Turf, Operator's Manual for Construction & Forestry, Customer Service ADVISOR™, Quick Reference Guides, Training & Safety Videos, and Simulators.

Display and CommandARM™ Simulator



Learn

Get the most out of your John Deere agricultural equipment by learning setup and adjustment at your convenience, and not when you're at the edge of the field.

Train

Make equipment operators more effective by training them ahead of the season, in a risk-free environment.

Support

Answer operator questions remotely, by referring to the software from more than 50 machine and implement simulations.

[Go to Display Simulator >](#)





JOHN DEERE