

## LITERACY ACTIVITY

# How Am I Grouped?

**Alpacas are grouped in different ways to help us understand more about their features.**

I am a **living** thing because I move, respire, am sensitive to the environment, grow, reproduce, excrete and need nutrition.

I am part of the **animal** kingdom.

I am a **mammal** because I am nourished with milk when I am young, I have hair/fur and other special features inside my body that other animals don't have.

I am in the **camelid** family because I am large with a slender neck and long legs. I have unique two-toed feet with soft pads and a stomach that has three chambers. Camels and llamas are part of this family too.

There are two **breeds** of alpacas. They are called:

- huacaya
- suri



*Huacaya*



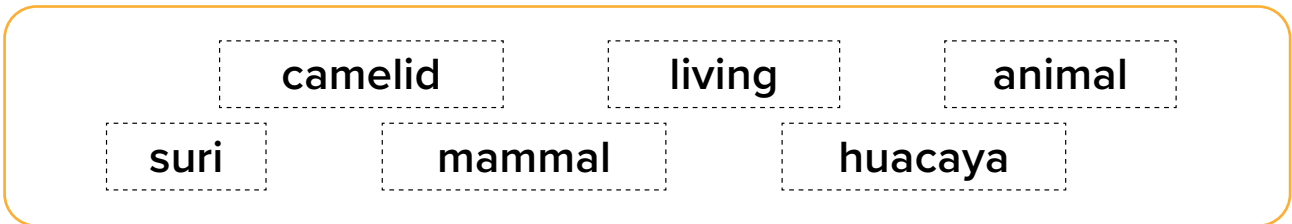
*Suri*

This resource has been developed by:

## CLOZE PASSAGE ACTIVITY

# How Am I Grouped?

Use the words below to fill in the missing spaces.



Alpacas are grouped in different ways to help us understand more about their features.

I am a \_\_\_\_\_ thing because I move, respire, am sensitive to the environment, grow, reproduce, excrete and need nutrition.

I am part of the \_\_\_\_\_ kingdom.

I am a \_\_\_\_\_ because I am nourished with milk when I am young. I have hair/fur and other special features inside my body that other animals don't have.

I am in the \_\_\_\_\_ family because I am large with a slender neck and long legs. I have unique two-toed feet with soft pads and a stomach that has three chambers. Camels and llamas are part of this family too.

There are two breeds of alpacas. They are called:

- \_\_\_\_\_
- \_\_\_\_\_

This resource has been developed by:

TRACING ACTIVITY

# Camels, Llamas and Alpacas



Camel

Average height to shoulder: 180cm



Llama

Average height to shoulder: 120cm



Alpaca

Average height to shoulder: 90cm

This resource has been developed by:

## LITERACY AND DATA SHEET ACTIVITY

# Camels, Llamas and Alpacas



A camel has a humped back, a short tail, long slim legs, and a long neck. It has two large toes that spread apart to keep the animal from sinking into the sand.

**Average height to shoulder: 180cm**



A llama is a bigger size than an alpaca with banana-shaped ears. They do not have humps. They have long legs and necks, short tails, small elongated heads, and large pointed ears. Their fleece is more coarse than an alpaca.

**Average height to shoulder: 120cm**



An alpaca is a slender-bodied animal with a long neck and long legs, a short tail, a small blunt shaped head, and large pointed ears. Alpacas are used for their fleece, as pets and herd protectors against foxes.

**Average height to shoulder: 90-95cm**

This resource has been developed by:

## MEASUREMENT ACTIVITY

# Counting on Me



**A camel is:**

- a) \_\_\_\_\_ hands in height
- b) \_\_\_\_\_ paper cups in height
- c) \_\_\_\_\_ in height



**A llama is:**

- e) \_\_\_\_\_ hands in height
- f) \_\_\_\_\_ paper cups in height
- g) \_\_\_\_\_ in height



**An alpaca is:**

- h) \_\_\_\_\_ hands in height
- i) \_\_\_\_\_ paper cups in height
- j) \_\_\_\_\_ in height

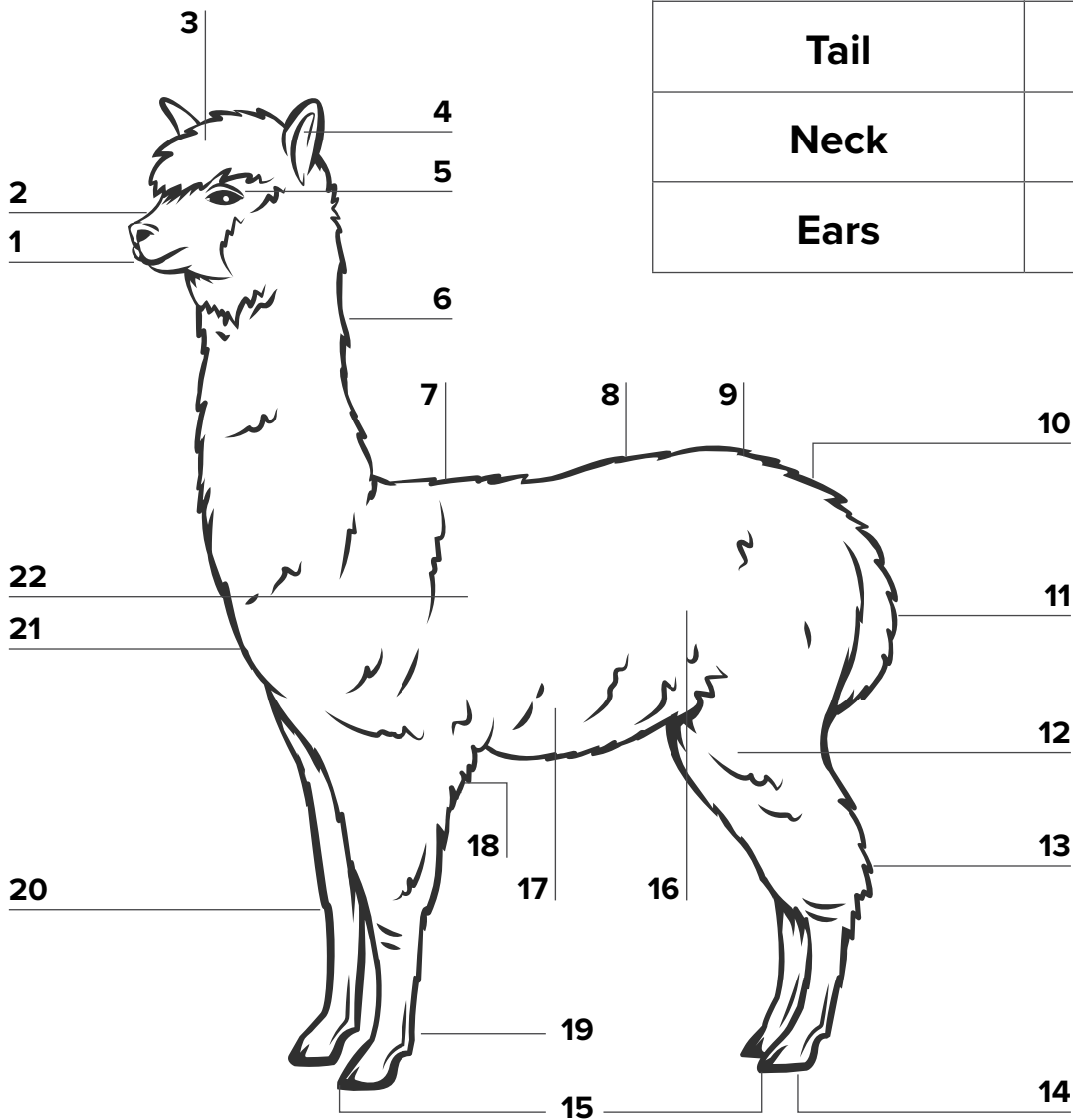
This resource has been developed by:

TABLE LABELLING ACTIVITY

# Alpacas

Find the feature and record the correct number in the table.

FEATURE	NUMBER
Toenail	
Muzzle	
Tail	
Neck	
Ears	

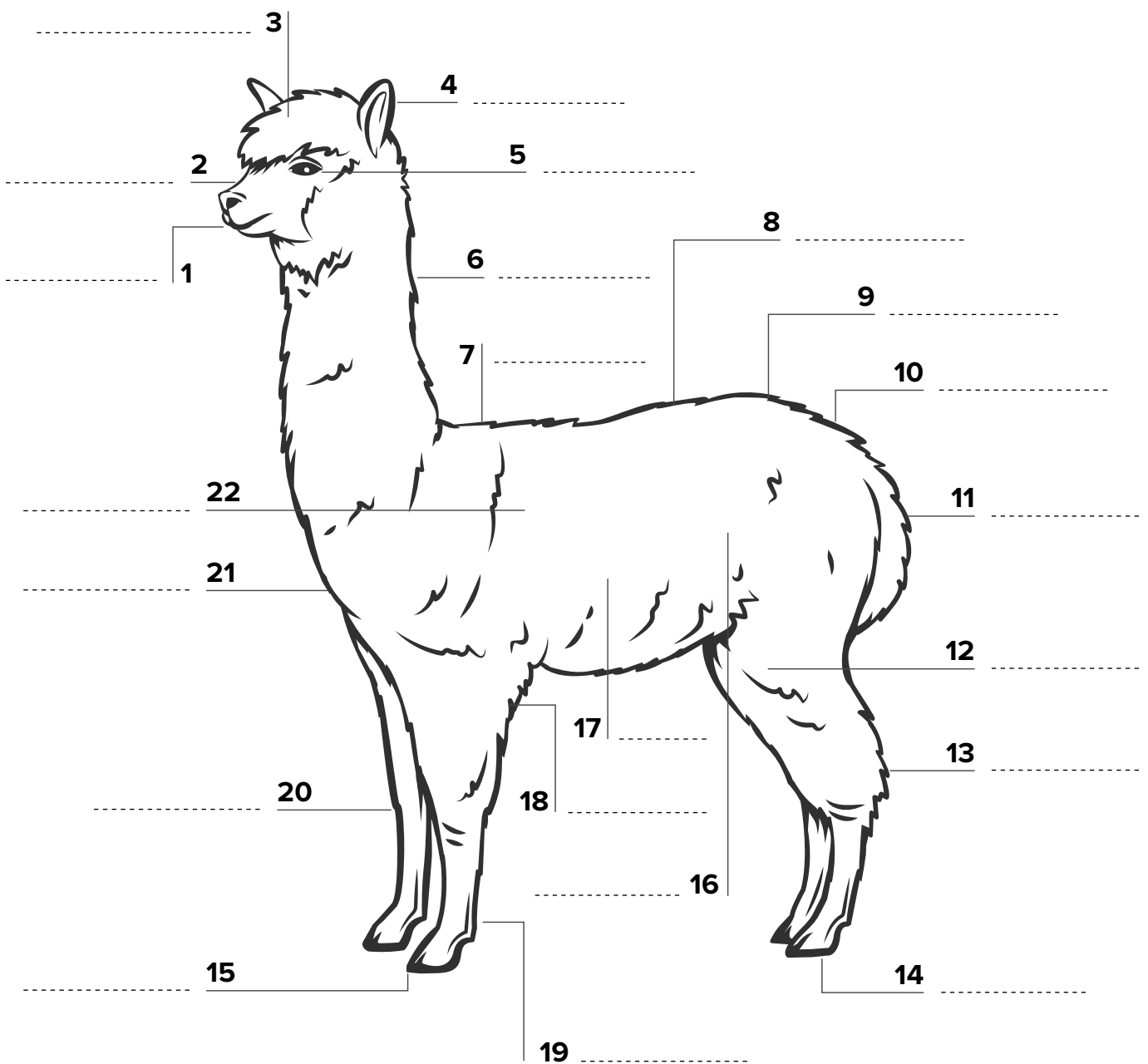


This resource has been developed by:

LABELLING ACTIVITY

# Alpacas

Label the features of the alpaca below by placing the name beside the correct number.



This resource has been developed by:

PROBLEM-SOLVING ACTIVITY

# Odd One Out

Which animal is the odd one out and does not belong in the series?



**Alpaca 1**



**Alpaca 2**



**Alpaca 3**

This resource has been developed by:



OBSERVATION ACTIVITY

# Huacaya and Suri



*Huacaya*



*Suri*

This resource has been developed by:

OBSERVATION ACTIVITY

# Huacaya and Suri



*Huacaya*



*Suri*

This resource has been developed by:

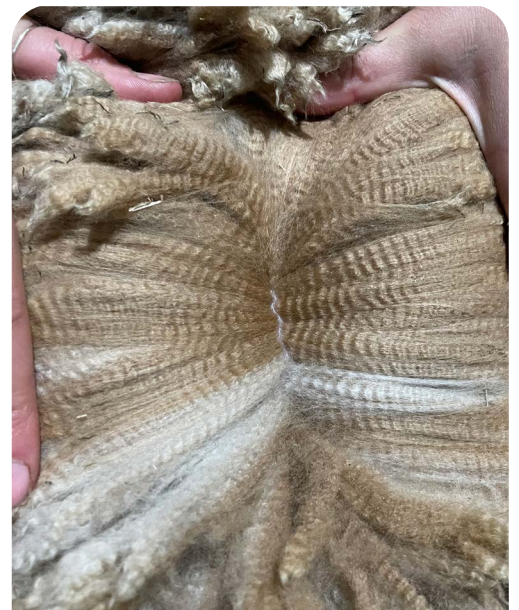
## LITERACY ACTIVITY

# Huacaya and Suri

**There are two distinct types of alpaca: huacaya and suri. The key difference between them is observed in their fleece characteristics.**

**Huacaya**, pronounced wua'ki'ya, is the most common alpaca type in both South America and Australia. The huacaya has a soft bonnet of fibre on its forehead and boasts 'mutton chops' on its cheeks, while its dense body fibre grows directly outwards, not unlike merino fleece. Ideally, fleece coverage is even and extends down the legs. Coverage should extend down the legs and up the neck to a full bonnet on the head with a clean muzzle and ears.

The less common type is the **suri**, pronounced soo'ree, and in Australia, only a small percentage of alpacas are suris. The animal is covered with lustrous, silky, locking fibre, prized both in the show ring and by processors. The fleece hangs from a centre part – neck through to tail – with the locks lying close to the skin in a draped, free-swinging curtain. The fleece has lustre, and its feel is more slippery and silky than that of the huacaya. The predominant suri colours are white or light fawn.



*Huacaya*



*Suri*

This resource has been developed by:

CUT AND PASTE ACTIVITY

# Huacaya and Suri

A.

B.

This resource has been developed by:



Soft feeling  
fibre



Hanging  
fibre



Suri



Outwards  
growing fibre



Silky feeling  
fibre

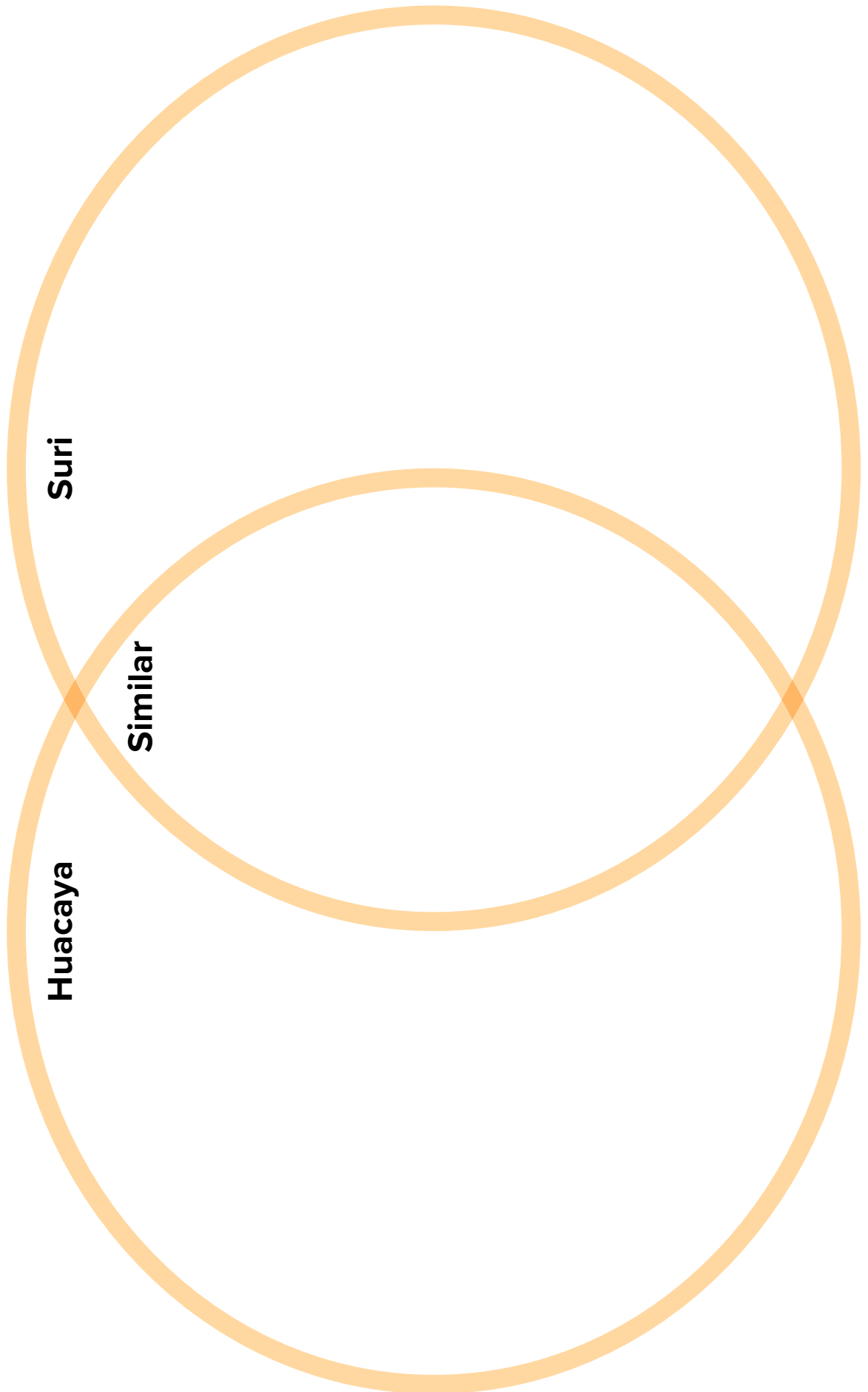


Huacaya



VENN DIAGRAM ACTIVITY

# Huacaya and Suri – Similar and Different



This resource has been developed by:

## DRAWING ACTIVITY

# What do Alpacas Need?

**Living things need: food, water, shelter and air to survive.**

Draw an alpaca on a farm and provide it with:

- grass for **food**
- **water** to drink
- trees for **shelter** from the hot sun, and
- plenty of fresh **air** to breath/respire

This resource has been developed by:

SEASONAL ACTIVITY

# Making a Paper Plate Calendar – Materials

Collect the following materials:



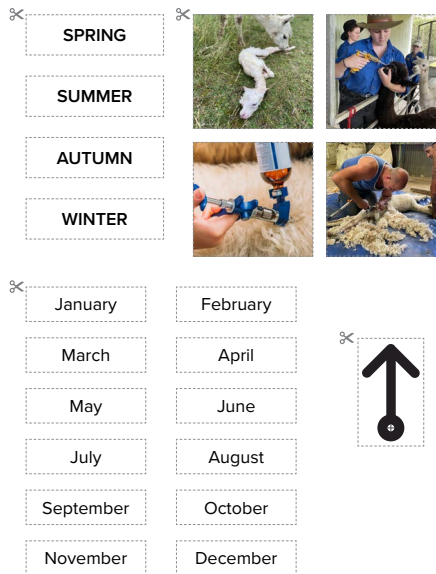
1 x large paper plate



1 x metal pin/fastener



1 x scissors



1 x template  
(see following page)



1 x glue stick



1 x marker pen



1 x ruler

This resource has been developed by:





SPRING

SUMMER

AUTUMN

WINTER



January

February

March

April

May

June

July

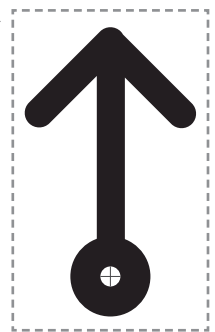
August

September

October

November

December



This resource has been developed by:

SEASONAL ACTIVITY

# Making a Paper Plate Calendar – Instructions

**Step 1** – Use a ruler and a marker to divide the plate.  
Draw two lines that cross and a circle inside the outer edge.



This resource has been developed by:

SEASONAL ACTIVITY

# Making a Paper Plate Calendar – Instructions (cont.)

**Step 2** – Use scissors to neatly cut the words from the supplied label template.

✂️ SPRING

SUMMER

AUTUMN

WINTER



✂️ January

February

March

April

May

June

July

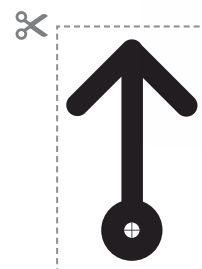
August

September

October

November

December

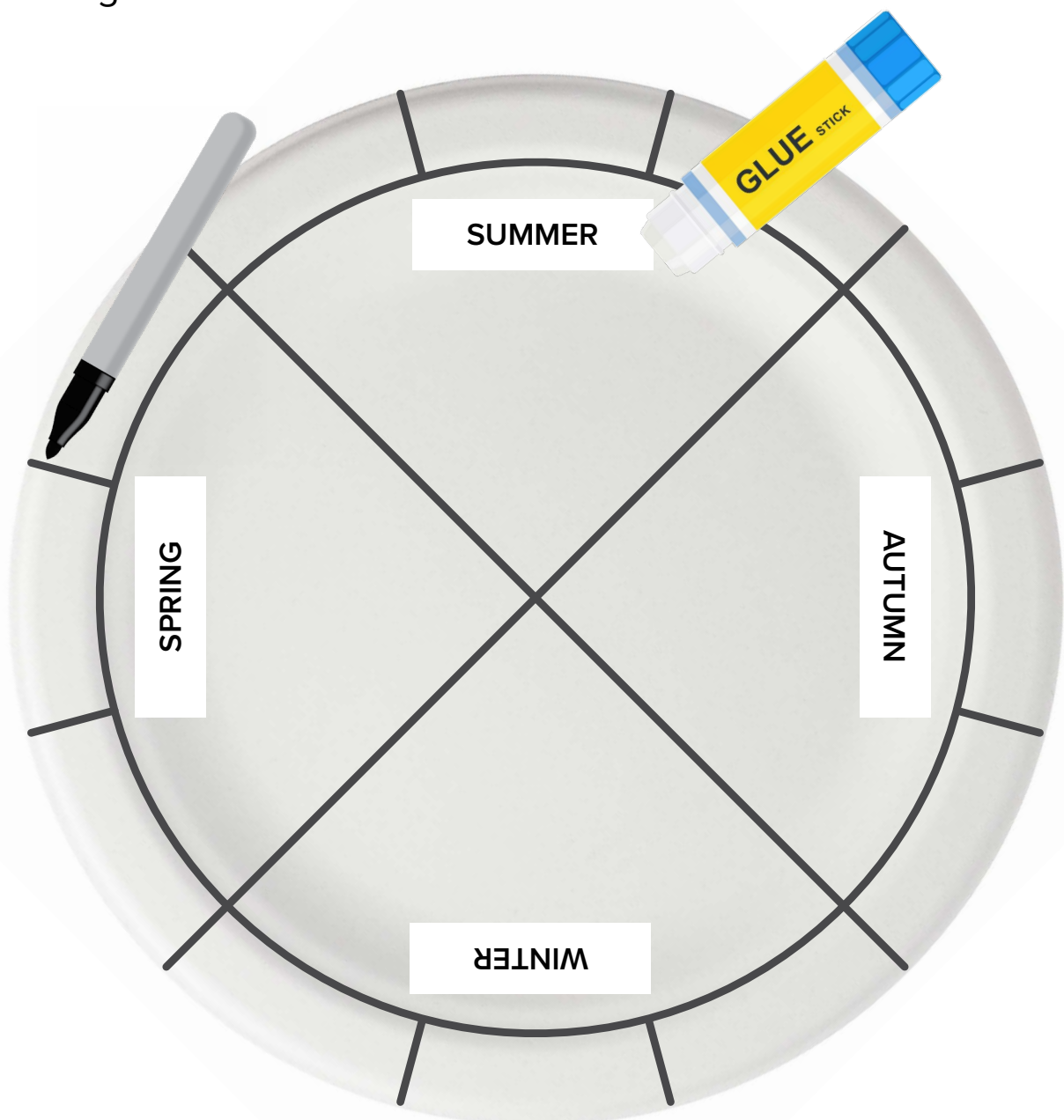


This resource has been developed by:

SEASONAL ACTIVITY

# Making a Paper Plate Calendar – Instructions (cont.)

**Step 3** – On the paper plate, use the marker to divide the outer circle into 12 even segments (four x segments of three) and then paste the names of the seasons in the correct order, starting with summer.



This resource has been developed by:

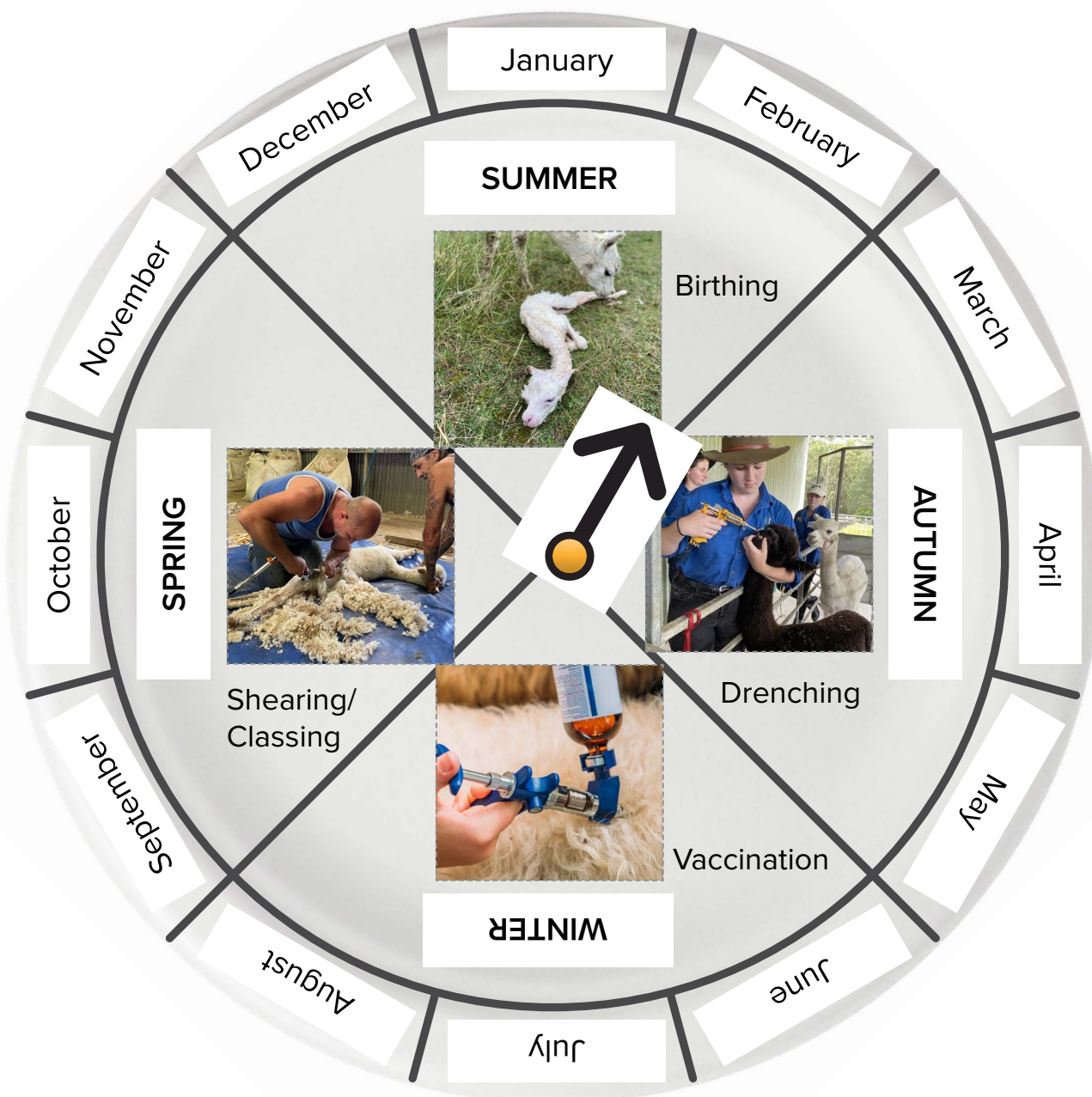
SEASONAL ACTIVITY

# Making a Paper Plate Calendar – Instructions (cont.)

**Step 4** – Paste the months of the year into the correct segments.

**Step 5** – Match and paste the jobs into the correct season.

Finally, secure the arrow with a paper fastener so that it can turn.



This resource has been developed by: