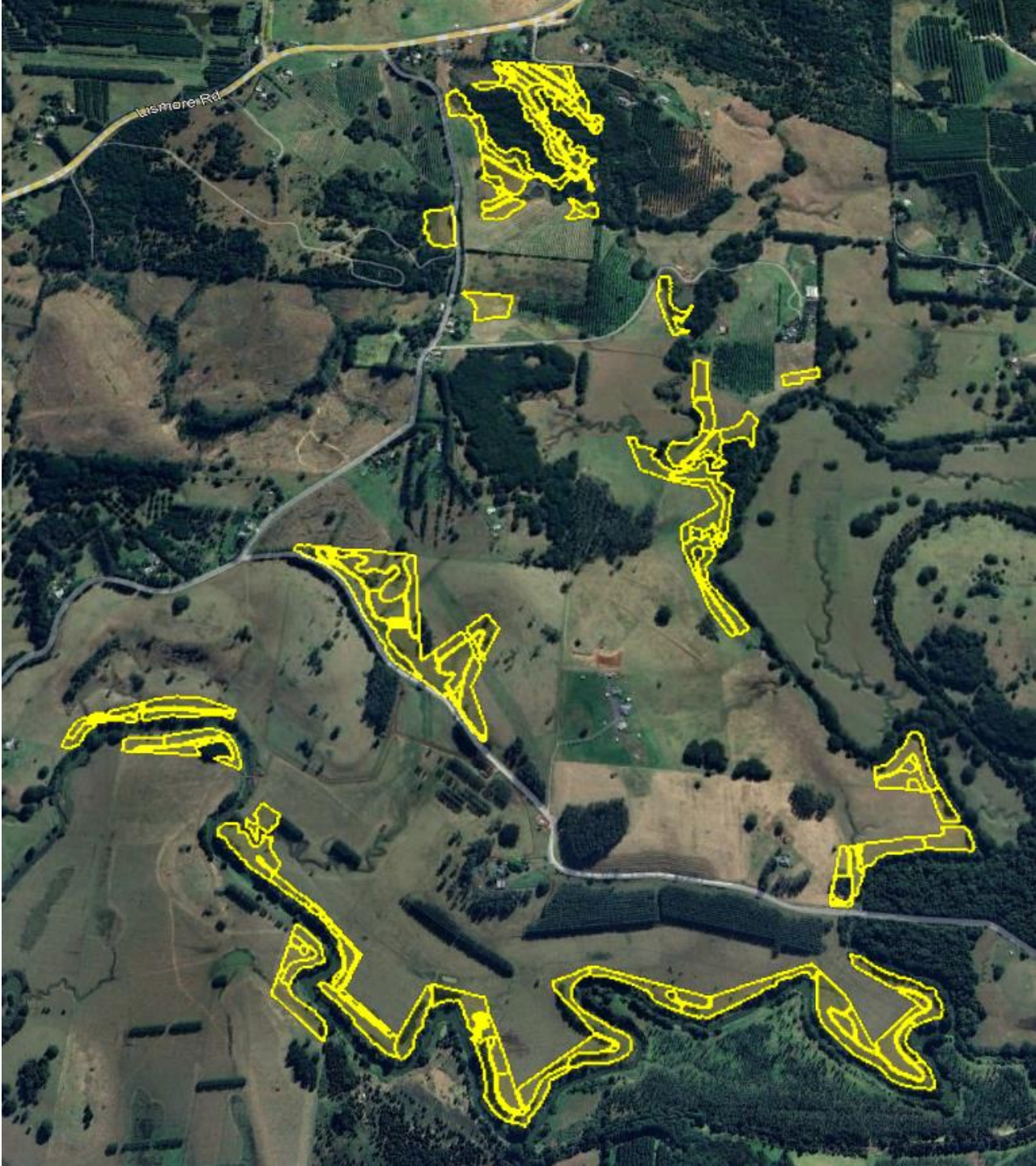




RN



261 000 trees -- 184 species

9 months --

1.5 meter spacing for stratification

zones for;

*General rainforest *Wet *High *Riparian

3 years maintenance per tree



1	<i>Abrophyllum ornans</i>	Native Hydrangea	26	<i>Atractocarpus chartaceus</i>	Narrow-leaved Gardenia
2	<i>Acacia disparrima ssp. disparrima</i>	Brush Ironbark Wattle	27	<i>Auranticarpa rhombifolia</i>	Hollywood
3	<i>Acacia floribunda</i>	White Sally	28	<i>Austromyrtus dulcis</i>	Midgenberry
4	<i>Acacia maidenii</i>	Maiden's Wattle	29	<i>Backhousia myrtifolia</i>	Cinnamon Myrtle
5	<i>Acacia melanoxylon</i>	Blackwood	30	<i>Baloghia inophylla</i>	Brush Bloodwood
6	<i>Acacia suaveolens</i>	Sweet Wattle	31	<i>Banksia integrifolia</i>	Coastal Banksia
7	<i>Acmena hemilampra</i>	Blush Satinash	32	<i>Beilschmiedia obtusifolia</i>	Blush Walnut
8	<i>Acronychia laevis</i>	Glossy Acronychia	33	<i>Brachychiton acerifolius</i>	Illawarra Flame Tree
9	<i>Acronychia oblongifolia</i>	White Aspen	34	<i>Brachychiton discolor</i>	Lacebark Tree
10	<i>Acronychia pubescens</i>	Hairy Acronychia	35	<i>Breynia oblongifolia</i>	Breynia
11	<i>Alchornea ilicifolia</i>	Native Holly	36	<i>Caldcluvia Paniculosa</i>	Rose Leaf Marara
12	<i>Allocasuarina littoralis</i>	Black Oak	37	<i>Callicarpa pedunculata</i>	Velvet Leaf
13	<i>Allocasuarina torulosa</i>	Forest Oak	38	<i>Callicoma serratifolia</i>	Black Wattle
14	<i>Alocasia brisbanensis</i>	Cunjevoi	39	<i>Castanospermum australe</i>	Black Bean
15	<i>Alphitonia excelsa</i>	Red Ash	40	<i>Castanospora alphandii</i>	Brown Tamarind
16	<i>Alphitonia petriei</i>	Pink Ash	41	<i>Casuarina glauca</i>	Swamp Oak
17	<i>Alpinia caerulea</i>	Native Ginger	42	<i>Clerodendron floribundum</i>	Smooth Clerodendron
18	<i>Aphananthe philippinensis</i>	Rough-leaved Elm	43	<i>Commelina cyanea</i>	Native Wandering Jew
19	<i>Araucaria cunninghamii</i>	Hoop Pine	44	<i>Commersonia bartramia</i>	Brown Kurrajong
20	<i>Archidendron grandiflorum</i>	Pink Laceflower	45	<i>Cordyline petiolaris</i>	Broad-leaved Palm Lily
21	<i>Archidendron hendersonii</i>	White Laceflower	46	<i>Cordyline rubra</i>	Palm-Lily
22	<i>Archontophoenix cunninghamiana</i>	Bangalow Palm	47	<i>Cordyline stricta</i>	Narrow-leaved Palm Lily
23	<i>Argyrodendron actinophyllum</i>	Black Booyong	48	<i>Crinum pedunculatum</i>	Beach Lily
24	<i>Argyrodendron trifoliolatum</i>	White Booyong	49	<i>Cryptocarya glaucescens</i>	Jackwood
25	<i>Arytera distylis</i>	Twin-leaved Coogera	50	<i>Cryptocarya laevigata</i>	Glossy Laurel

51 <i>Cryptocarya microneura</i>	Murrogun	76 <i>Endiandra globosa</i>	Black Walnut
52 <i>Cryptocarya obovata</i>	Pepperberry	77 <i>Endiandra pubens</i>	Hairy Walnut
53 <i>Cryptocarya rigida</i>	Forest Maple	78 <i>Eucalyptus grandis</i>	Flooded Gum
54 <i>Cryptocarya triplinervis</i>	Three Veined Laurel	79 <i>Eucalyptus microcorys</i>	Tallowwood
55 <i>Cryptocarya triplinervis</i> var. <i>pubens</i>	Hairy Three-veined laur	80 <i>Ficus coronata</i>	Creek Sandpaper Fig
56 <i>Cupaniopsis anacardioides</i>	Tuckeroo	81 <i>Ficus fraseri</i>	Sandpaper Fig
57 <i>Cupaniopsis parvifolia</i>	Small-leaved Tuckeroo	82 <i>Ficus macrophylla</i>	Moreton Bay Fig
58 <i>Davidsonia jerseyana</i>	Davidson's Plum	83 <i>Ficus obliqua</i>	Small-leaved Fig
59 <i>Dianella caerulea</i>	Blue Flax Lily	84 <i>Ficus rubiginosa</i>	Rusty Fig
60 <i>Dianella longifolia</i>	Blueberry Lily	85 <i>Ficus superba</i> var. <i>henneana</i>	Deciduous Fig
61 <i>Dinosperma erythrococcum</i>	Tingletongue	86 <i>Ficus virens</i>	White Fig
62 <i>Diospyros australis</i>	Black Plum	87 <i>Ficus watkinsiana</i>	Strangler Fig
63 <i>Diospyros pentamera</i>	Myrtle Ebony	88 <i>Flindersia australis</i>	Teak
64 <i>Diploglottis australis</i>	Native Tamarind	89 <i>Flindersia bennettiana</i>	Bennetts Ash
65 <i>Diploglottis campbellii</i>	Small-leaved Tamarind	90 <i>Flindersia schottiana</i>	Cudgerie
66 <i>Duboisia myoporoides</i>	Corkwood	91 <i>Flindersia xanthoxyla</i>	Yellowwood
67 <i>Dysoxylum fraserianum</i>	Rosewood	92 <i>Floydia praealta</i>	Ball Nut
68 <i>Dysoxylum mollissimum</i>	Red Bean	93 <i>Gahnia clarkei</i>	Tall Saw-sedge
69 <i>Ehretia acuminata</i> var. <i>acuminata</i>	Koda	94 <i>Gahnia sieberiana</i>	Red-fruit Saw-sedge
70 <i>Elaeocarpus eumundi</i>	Eumundi Quandong	95 <i>Glochidion ferdinandi</i>	Cheese Tree
71 <i>Elaeocarpus grandis</i>	Blue Quandong	96 <i>Glochidion sumatranum</i>	Umbrella Cheese Tree
72 <i>Elaeocarpus obovatus</i>	Hard Quandong	97 <i>Gmelina leichhardtii</i>	White Beech
73 <i>Elaeocarpus reticulatus</i>	Blueberry Ash	98 <i>Grevillea robusta</i>	Silky Oak
74 <i>Elattostachys nervosa</i>	Green Tamarind	99 <i>Guilfoylia monostylis</i>	Guilfoylia
75 <i>Endiandra floydii</i>	Crystal Creek Walnut	100 <i>Guioa semiglauca</i>	Guioa

101 <i>Harpullia hillii</i>	Blunt-leaved Tulip	126 <i>Mallotus philippensis</i>	Red Kamala
102 <i>Harpullia pendula</i>	Tulipwood	127 <i>Melaleuca bracteata</i>	Black Tea-tree
103 <i>Hibiscus heterophyllus</i>	Native Rosella	128 <i>Melaleuca quinquenervia</i>	Broad-leaved Paperbark
104 <i>Hibiscus tiliaceus</i>	Cottonwood Hibiscus	129 <i>Melaleuca salicina</i>	Willow bottlebrush
105 <i>Hicksbeachia pinnatifolia</i>	Red Bopple Nut	130 <i>Melaleuca viminalis</i>	Weeping Bottlebrush
106 <i>Homalanthus nutans</i>	Mamala Tree	131 <i>Melastoma malabathricum</i>	Blue Tongue
107 <i>Homalanthus populifolius</i>	Bleeding Heart	132 <i>Melia azedarach var. australasica</i>	White Cedar
108 <i>Hovea acutifolia</i>	Pointed-leaved Hovea	133 <i>Melicope elleryana</i>	Pink Euodia
109 <i>Huberantha nitidissima</i>	Shiny-leaf Tree	134 <i>Melicope micrococca</i>	White Euodia
110 <i>Hymenosporum flavum</i>	Native Frangipani	135 <i>Micromelum minutum</i>	Lime Berry
111 <i>Jacksonia scoparia</i>	Dogwood	136 <i>Mischocarpus pyriformis</i>	Yellow Pear-fruit
112 <i>Jagera pseudorhus</i>	Foambark Tree	137 <i>Myrsine howittiana</i>	Brush Muttonwood
113 <i>Karrabina benthamiana</i>	Red Carabeen	138 <i>Myrsine variabilis</i>	Muttonwood
114 <i>Lepiderema pulchella</i>	Fine-leaved Tuckeroo	139 <i>Neisosperma poweri</i>	Milkbush
115 <i>Leptospermum petersonii</i>	Lemon-scented Teatree	140 <i>Neolitsea australiensis</i>	Green Bolly Gum
116 <i>Leptospermum polygalifolium</i>	Jelly Bush	141 <i>Neolitsea dealbata</i>	Hairy-leaved Bolly Gum
117 <i>Linospadix monostachyos</i>	Walking Stick Palm	142 <i>Notelaea longifolia</i>	Mock Olive
118 <i>Litsea reticulata</i>	Bolly Gum	143 <i>Pararchidendron pruinatum</i>	Snow wood
119 <i>Livistona australis</i>	Cabbage Tree Palm	144 <i>Pararistolochia praevenosa</i>	Birdwing Butterfly Vine
120 <i>Lomandra hystrix</i>	Forest Mat-rush	145 <i>Pilidiostigma glabrum</i>	Plum Myrtle
121 <i>Lomandra longifolia</i>	Spiny head Mat-rush	146 <i>Pipturus argenteus</i>	Native Mulberry
122 <i>Lophostemon confertus</i>	Brush Box	147 <i>Pittosporum revolutum</i>	Hairy Pittosporum
123 <i>Lophostemon suaveolens</i>	Swamp Box	148 <i>Pittosporum undulatum</i>	Sweet Pittosporum
124 <i>Macaranga tanarius</i>	Macaranga	149 <i>Planchonella australis</i>	Black Apple
125 <i>Mallotus discolor</i>	Yellow Kamala	150 <i>Planchonella chartacea</i>	Thin-leaved Coondoo

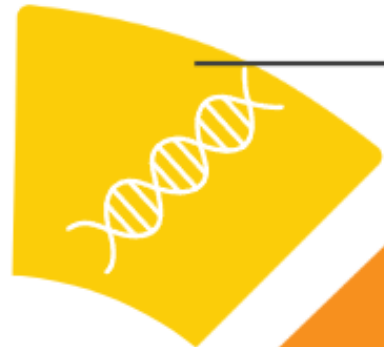
151 <i>Podocarpus elatus</i>	Plum Pine	176 <i>Syzygium smithii</i> var. <i>minor</i>	Dwarf Lilly Pilly
152 <i>Polyosma cunninghamii</i>	Featherwood	177 <i>Tabernaemontana pandacaqui</i>	Banana Bush
153 <i>Polyscias elegans</i>	Celerywood	178 <i>Toechima dasyrrhache</i>	Blunt-leaved Steelwood
154 <i>Polyscias murrayi</i>	Pencil Cedar	179 <i>Toona ciliata</i>	Red Cedar
155 <i>Psychotria daphnoides</i>	Smooth Psychotria	180 <i>Trema tomentosa</i> var. <i>aspera</i>	Native Peach
156 <i>Psychotria loniceroides</i>	Hairy Psychotria	181 <i>Trema tomentosa</i> var. <i>viridis</i>	Poison Peach
157 <i>Rhodosphaera rhodanthema</i>	Deep Yellowwood	182 <i>Tristaniopsis laurina</i>	Water Gum
158 <i>Sarcopteryx stipata</i>	Steelwood	183 <i>Wilkiea austroqueenslandica</i>	Smooth Wilkiea
159 <i>Schoenoplectiella mucronata</i>	Rush	184 <i>Wilkiea huegeliana</i>	Veiny Wilkiea
160 <i>Sloanea australis</i>	Maiden's Blush		
161 <i>Sloanea woollsii</i>	Yellow Carabeen		
162 <i>Solanum aviculare</i>	Kangaroo Apple		
163 <i>Stenocarpus sinuatus</i>	Firewheel Tree		
164 <i>Sterculia quadrifida</i>	Peanut Tree		
165 <i>Synoum glandulosum</i>	Scentless Rosewood		
166 <i>Syzygium floribundum</i>	Weeping Lilly Pilly		
167 <i>Syzygium francisii</i>	Giant Water Gum		
168 <i>Syzygium hemilamprum</i>	Broad-leaved Lilly Pilly		
169 <i>Syzygium hodgkinsoniae</i>	Red Lilly Pilly		
170 <i>Syzygium ingens</i>	Red Apple		
171 <i>Syzygium luehmannii</i>	Riberry		
172 <i>Syzygium moorei</i>	Durobby		
173 <i>Syzygium oleosum</i>	Blue Lilly Pilly		
174 <i>Syzygium smithii</i>	Common Lilly Pilly		
175 <i>Syzygium smithii</i> (rheophytic race)	Lilly Pilly (creek form)		



Big vision and Accumen



Expertise, Science and Training



Corporate, NGO and Business partnerships



Athleticism, Brute labour and Team work



All were needed

Strong project planning, Practicality and Determination



ACCU accreditation and Tax Deductibility



Logistics, Supply, Coordination and Capacity



Media representation, reporting and outreach

